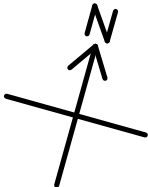


Durham Road 21

0 100m 200m 300m 400m 500m

- single-track
- double track
- - - - - Uncertain trail
- █ entrance and car park
- +— Gate
- >— (Down) hill
- Closed (explicitly or implicitly)



Durham Road 23

outdoor centre

MAIN PARKING

Burnt Toast

Bowes Trail

Bowes Too

Sand

Conc. 7

gravel pit

Stone Soup

Coyote Junction

Lickity

Split

Tower Hill

The Maze

Logs Over Easy

Ogre and Out

New

Maple Gravy

Houston Rd.

parking

microwave towers

← To Walker Woods

Wall of Pain

Superfly Alley  
slide

The Pines

Lunartic Way

**Durham Forest**  
**Beware poison ivy**

last updated 2012-10-31

© Copyright 2002-2012 Michael R. Sweet  
Uxbridge  
mrs@gotwisted.com

private